

# NITRILE GENTLE TOUCH LONG CUFF DARK BLUE



<b>NITRILE</b>	<b>DARK BLUE</b>	<b>POWDER FREE</b>	<b>S-XL</b>	<b>AMBIDIESTROUS</b>	<b>NON STERIL</b>
----------------	------------------	------------------------	-------------	----------------------	-------------------

Comfortable nitrile glove. **Special Long**. It offers protection against specific chemical risks and against solvents in sporadic contact. It offers a wide variety of general uses highlighting medical use, examination, food handling, lab, cleaning, etc.

## Characteristics:

<b>Suitable for latex allergic people.</b>	<b>Finger textured. Making easy grip.</b>
<b>Blue, powder free, single use, ambidextrous</b>	<b>Excellent chemical resistance and splash protection up to arm</b>
<b>Long-beaded cuff allows easy donning and doffing</b>	<b>Enhance comfortable with soft and silky feel for extended wear.</b>

## Presentación:

- 100 pieces par dispenser, with a petrochemical opening for a hygienic access to the glove.
- Packaging contains: 10 dispensers of 100 units
- Box Dimension: 290 x 90 x 120 mm
- Carton Dimension: 300 x 455 x 248 mm



**Labelling:** Manufacturing date, expiration date, batch number, reference and EAN code. Product name in several languages: Spanish, English, French, German, Italian, Portuguese.

CE marking, protection pictograms, safety standards and legislation. Size, size guide and units.

## Normative:

- Category III. Marca CE mark according to Regulation (EU) 2016/425.
- Class I. Royal Decree 2017/745 which regulates sanitary products, which transposes Directive 93/42 CEE.
- Complies with food handling requirements. 10/2011 of 14 January 2011 on plastic material and articles intended to come into contact with food.
- EN ISO EN 374-1:2016/A1:2018. EN 455-1-2-3
- EN ISO EN 374-5:2016. (EN 374-4). ISO 16604:2004 Bacteriófago
- EN 420:2003+A1: 2009. EN ISO 21420:2020

RUBBEREX SPAIN S.L

+34 96 166 7124

[info@rubberex.es](mailto:info@rubberex.es)

[www.rubberex.es](http://www.rubberex.es)

Polígono Industrial Masía del Baló. C/Mas Vallesa de Mandor N8 Nave12. CP. 46190. Ribarroja del Turia. Valencia. España



## CHEMICAL RESISTANCE

### PERMEATION. EN ISO 374-1:2016/A1.2018

Gloves are classified in terms of time of passage, according to each individual chemical for which the glove resists permeation:

CHEMICALS	LEVEL	LETTER
40 PER CENT SODIUM HYDROXIDE	6	K
N-HEPTANE	6	J
37 PER CENT FORMALDEHYDE	6	T
METHANOL	1	A
AMMONIA 25%	1	O

Performance Level:

Time (min)	> 10	> 30	> 60	> 120	> 240	> 480
Performance Level	1	2	3	4	5	6

### DEGRADATION. EN 374-4:2013

Degradation % (DR) is determined for each chemical made in the permeation.

(DR) K: 40% Sodium Hydroxide = 17.0%

(DR) J: n-Heptane = 38.5%

(DR) P: 30% Hydrogen Peroxide 30%: 6.41%

(DR) T: 37% Formaldehyde: 15.56%

(DR) : Methanol = 78,38%

(DR) : Hidróxido de amonio 25% = 7,01%

The "Nitrile LONG CUFF", nitrile glove PPE should be used to protect the user's hand against chemical risks (products and levels mentioned above) and against microbiological risks (bacteria, fungi and virus).

The present PPE should never be used against other risks than those described above. The use of his PPE should be evaluated correctly depending on the place of work.

RUBBEREX SPAIN S.L

+34 96 166 7124

[info@rubberex.es](mailto:info@rubberex.es)

[www.rubberex.es](http://www.rubberex.es)

Polígono Industrial Masía del Baló. C/Mas Vallesa de Mandor N8 Nave12. CP. 46190. Ribarroja del Turia. Valencia. España

# NITRILE GENTLE TOUCH LONG CUFF DARK BLUE



## OTHER CHEMICALS PERMEATION. EN 16523-1:2015+A1:2018

### CHEMICALS

	LEVEL	TIME (MIN)
SODIUM HYPOCHLORITE 13%	6	>480
PARACETIC ACID 32%	1	25 MIN
BANZALCONIUM CHLORIDE 50%	6	>480

EN ISO 374-1:2016 + EN  
ISO 374-1:2016/A1:2018  
Type B

EN ISO 374-5:2016



JKPT



VIRUS

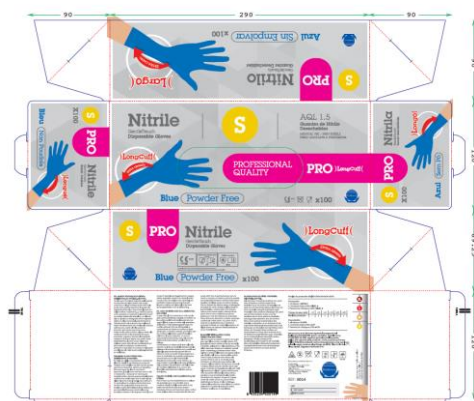


0161

CAT III

Glove Dimension	S	M	L	XL
Palm width mm	85 ± 5 mm	95 ± 5 mm	110 ± 5 mm	110 ± 5 mm
Length mm	Min 300 mm	Min 300 mm	Min 300 mm	Min 300 mm
Palm thickness mm (± 0.02)	0.15	0.15	0.15	0.15
Finger thickness mm (± 0.02)	0.17	0.17	0.17	0.17
Cuff thickness mm (± 0.02)	0.11	0.11	0.11	0.11
Weight gr. (± 0.3)	8.4	8.8	9.2	9.6

REF	Colour	Size	Size. Num	EAN
0014	Dark Blue	S	7	8435234500149
0015	Dark Blue	M	8	8435234500156
0016	Dark Blue	L	9	8435234500163
0017	Dark Blue	XL	10	8435234500170



Logistic:

Box: 100 pieces

carton: 10 inners

Pallet: 42 cajas

RUBBEREX SPAIN S.L

Rev 07. JUL 2023

+34 96 166 7124

info@rubberex.es

www.rubberex.es

Polígono Industrial Masía del Baló. C/Mas Vallesa de Mandor N8 Nave12. CP. 46190. Ribarroja del Turia. Valencia. España